



# Alice platform Introduction

SmartcityKorea Inc.

---



# 01



## Alice Introduction

---

Smart City IOC Platform

## Platform for the City Platform for the People

Alice is an integrated platform for comprehensive management used by the Smart City Integrated Control Center, and is an infrastructure solution that connects unlimited number of city management solutions, and immediately responds to and manages disaster and emergency situations in the city through favorable exchange with government sites. It is also a solution that efficiently delivers collected data to citizens and visitors as mobile services and communicates with them.

For example, urban prevention, traffic conditions, current status of energy (power, gas) use, climate and environmental information, parking problems, smart street lights, network security, healthcare, various IoT sensor information, water and sewage treatment, waste disposal, We'll efficiently process drone camera information, information coming from citizens, and information coming from other government agencies.

Better cities by managing stored big data or having predictive preventative effects through analysis. So the ultimate goal of this platform is to provide citizens with a more convenient urban environment

## alice Smart City IOC Platform



Korea Telecommunications Technology Association (TTA ) Certificate



Good Software 1 grade Certification

## Alice Smart City Platform Architecture



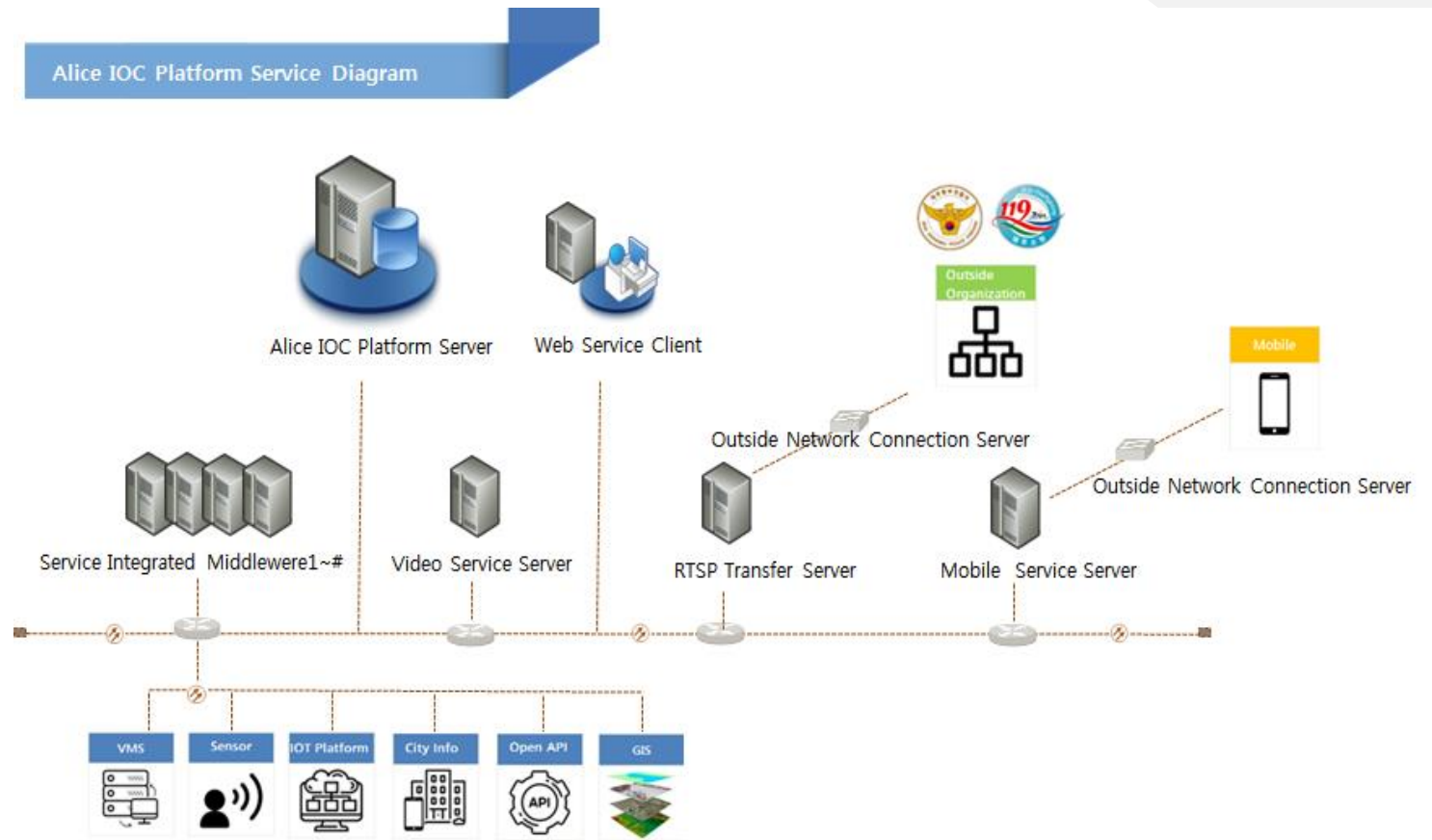
**Alice is Any Openness and Any Interoperability,  
Work for the open value of Any Customization.**

Alice Smart City integration platform is located in Web Service Client(Presentation Layer) and IOC Platform Server. It consists of an Service Integrated Middleware server (communication/site device middleware) for information connection with external agencies and a CCTV Video Service server. Also RTSP transfer server as well.

The Middleware server and the Video service server are connected by DB the connection information between the existing system and the associated agencies, including Police station, Fire Station, etc.

Provides disaster information with related agencies and connection information including CCTVs to the Web Service Client Layer.

For the citizen service and video notification to the manager, Mobile Service server is needed.



## Alice Smart City Platform Features

### interoperability



Alice has excellent interoperability with other types of systems and integrates data that are scattered such as CCTVs, systems, and sensors. Configures interoperability for seamless control

### UX/UI Customization



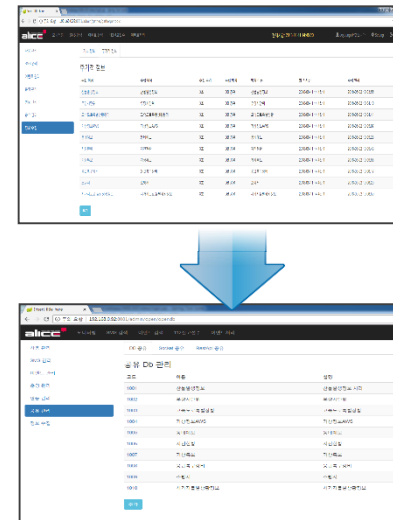
Alice can create multiple information icons on the MAP that can be sorted according to different situations and customer needs.

### Flexibility



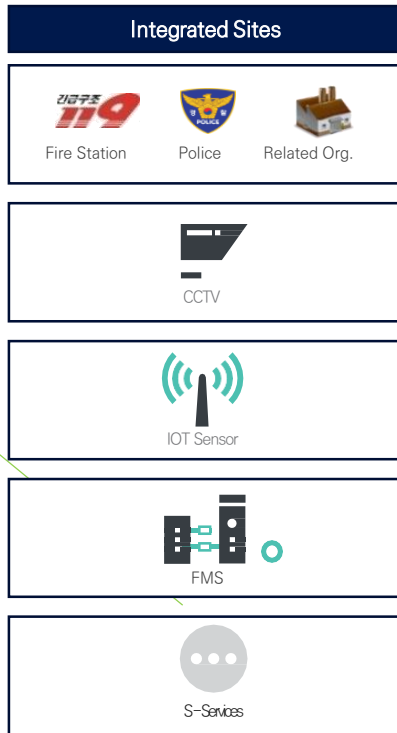
Express by platform user settings  
User wants besides UI  
The screen is displayed on each site.  
Optimized for Customization  
Control screen provided

### Automaticity



Collect and share linked solution DB.  
Bigdata collection support, ensuring automatic event handling.

## Alice Smart City Platform Web Viewers



Any Solutions  
S-service  
Sensor  
Management



**Total Integrated Monitoring Viewer**

- Login**: Welcome Smart City Platform
- Main Viewer**: Dashboard with map, charts, and video feeds
- Mobile Viewer**: 0.84 Watch Cam
- Main Viewer**: 3D city model and video feeds

# 02

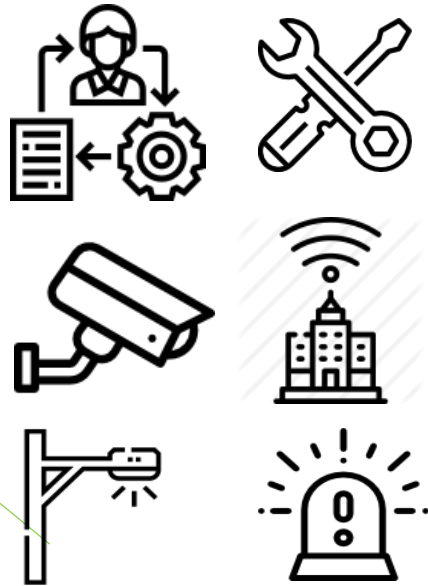


## Alice operating method

---

Smart City IOC Platform

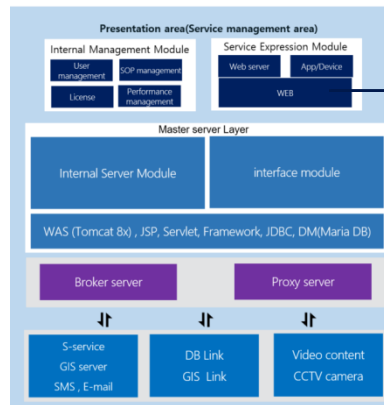
## Alice Smart City Platform Operation Plan



CCTV, EMS, ITS, Smart Street Lights, Environmental Sensors, Digital Signage, Access control, parking control, facility management, safety devices, tags, alarm sensors, etc.

Data transfer →

### Alice Smart City Platform



Interlocking linkage  
Data analysis  
Expression  
Situation propagation

SMS Notifications



Integrated Control Expression

**Uniform Integrated Expression**

Uniform screen display  
Express all linked solution information  
Real-time event information, such as alerts



Control / Management / Operations

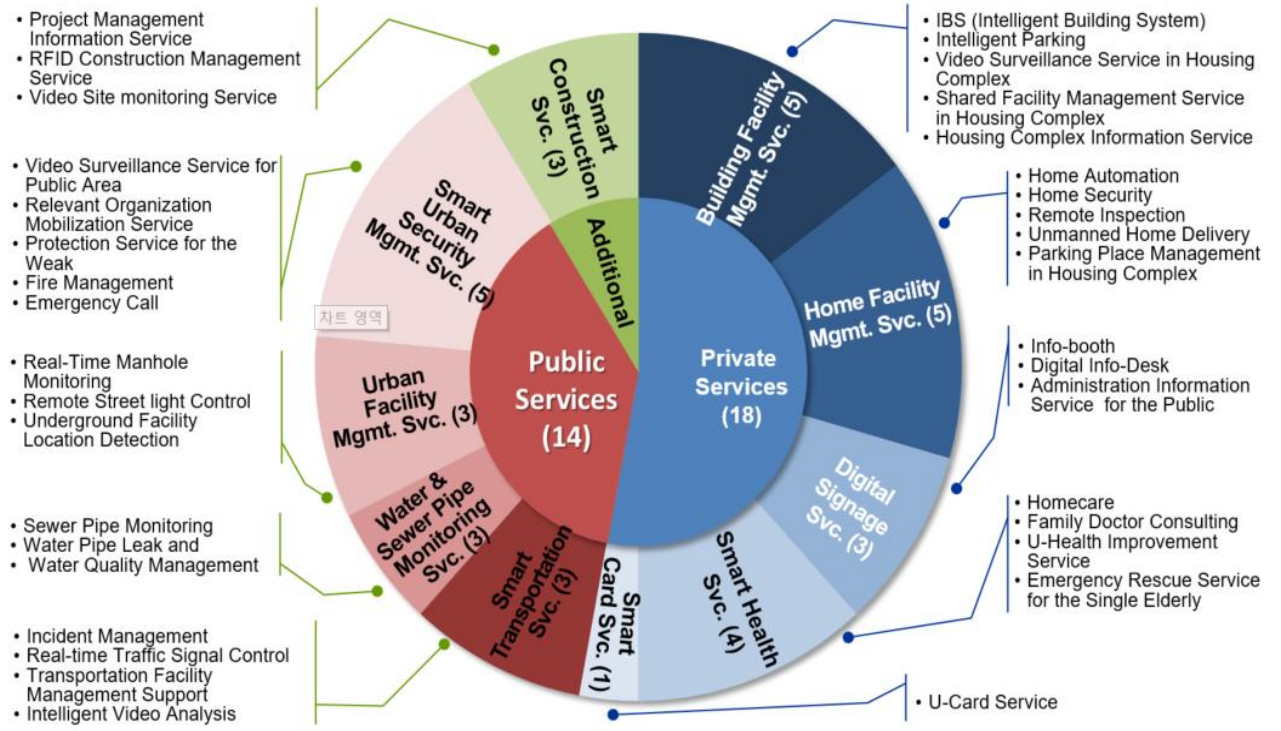
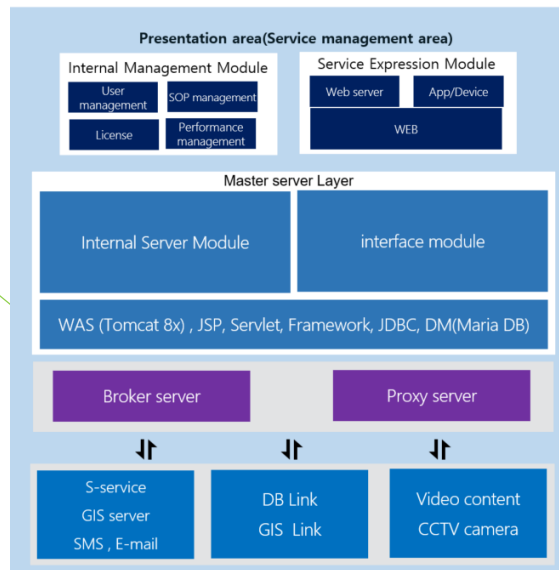


Location Based Information Dissemination



## Alice Smart City Platform Application Area

### Alice Smart City Platform



### Alice Smart City Platform Expansion Plan

Enter and add licenses in Store

→ Various linked services or solutions can be expanded by adding licenses in the store



Future Cloud-based services available for Living Labs

**Alice Store**  
Alice Master

Alice IOC Platform

Alice License Information	
Version	1.1000 Enterprise version
Portal Web Service	1
Common Database Service	1
Standard Mobile Service	1
Event Database Service	1
Map Service	3
Max Service Connection License	10

Service Start Date: 2018-01-01 00:00:00  
Service Expire Date: 2022-01-31 00:12:00

**Alice License Generation**

System Key: n1ITCkYmQVWVEGkCdGRFSRdqJq1eLk06T0CcMY49OZ4lggDFj3zQWpiq;EmfSK7abwCAInB/MOqpXAKbd

Import License Key: 파일 선택 | 선택된 파일 없음

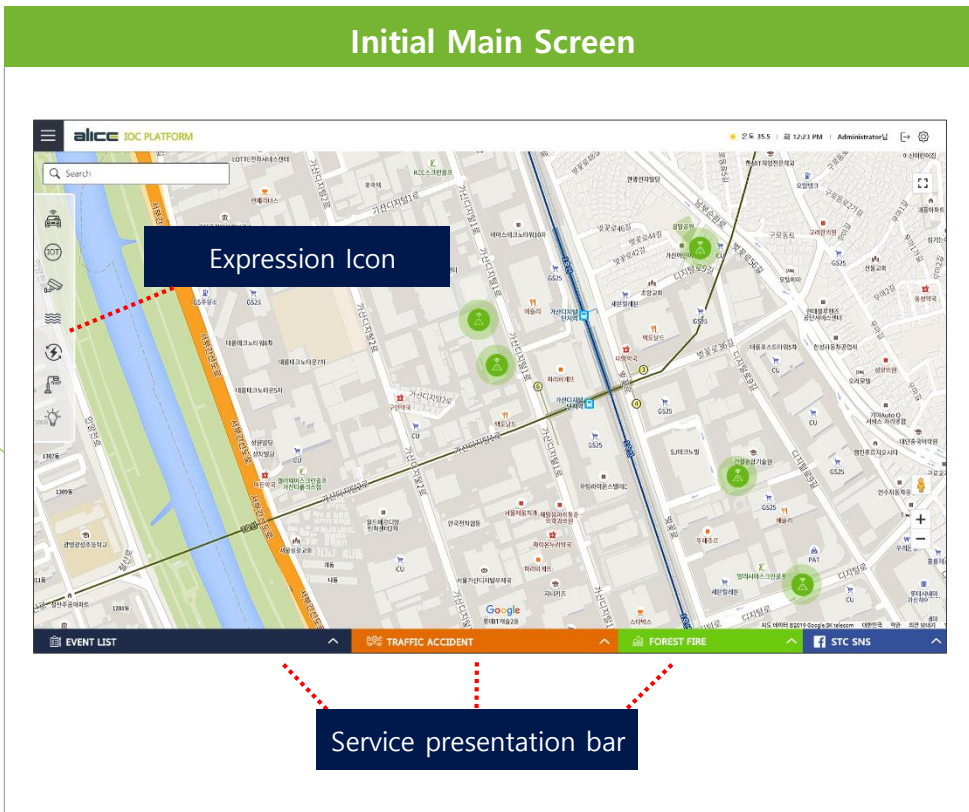
The alice IOC platform must be restarted after import license key !!

- Security: SecuX<sup>Smartcity</sup>Korea, TYBIS<sup>IoT</sup> Tybis<sup>Innodep</sup>, MSVR<sup>GIT</sup>
- Mobility
- Living
- Environment
- Utility: Genetec<sup>Genetec</sup>
- GIS

Developer

## Alice Smart City Platform Screen Configuration (Example)

Initial Main Screen



Operations Management Screen



## Alice Smart City Platform SOP Operations

Standardized business procedures (SOPs) can be established for users in all areas

→ Event handling environment according to operating procedure (SOP)

이벤트 종류	이벤트 위치	이벤트 유형	이벤트 이름	유형별 그룹	유형별 분류	이벤트	리소스	현	상태	수정 일자
이벤트 관리	이벤트 관리	이벤트 관리	이벤트 관리	이벤트 관리	이벤트 관리	이벤트 관리	이벤트 관리	이벤트 관리	이벤트 관리	이벤트 관리

SOP Report

Event 처리 추가

Event 처리: 화재발생 Of SensorBroker

이벤트 그룹명:  사용 화재

사운드 그룹명:  사용 화재발생

팝업 그룹명:  사용 이벤트팝업

리스트 그룹명:  사용 이벤트리스트

추가

Add SOP

No.	서비스 이름	이벤트 이름	제어 서비스	제어 내용	일자	수정	삭제
1	SensorBroker	화재종류	MobileBroker	문자전송	2020-07-28 16:37:42	사용	삭제
2	SensorBroker	화재종류	KTSPBroker	영상소스보장	2020-07-28 16:17:21	사용	삭제
3	SensorBroker	화재발달량	MobileBroker	문자전송	2020-07-28 16:38:38	사용	삭제
4	SensorBroker	화재발달량	MobileBroker	문자전송	2020-07-28 16:38:38	사용	삭제
5	SensorBroker	교통사고발생	MobileBroker	문자전송	2020-07-28 16:38:58	사용	삭제
6	SensorBroker	교통사고발생	MobileBroker	문자전송	2020-07-28 16:39:06	사용	삭제
7	SensorBroker	공사시작	MobileBroker	문자전송	2020-07-28 16:39:15	사용	삭제
8	SensorBroker	공사완료	MobileBroker	문자전송	2020-07-28 16:39:24	사용	삭제

SOP Service

# 03



## Alice Mobile Service Platform

---

Smart City IOC Platform

# 03. Alice Mobile Platform

Smart city Platform

## Alice Mobile Service Platform

introduction | Alice Smart City Platform Mobile App.

# alice M

## Smart City Mobile Platform

Received all events through Alarm push service

- Live video monitoring with connected CCTV Camera
- Integrated 3<sup>rd</sup> services data supporting
- Single App. supports integrated multi-App supporting



# 03. Alice Mobile Service App.

Smart Service Solution

## Smart Service Mobile Application

introduction | Smart Service Mobile Application



### Emergency Signal **Mobile** App.

SecuCat is a smart phone application. When a registered user sends an emergency signal, the integrated control center receives the location information of the mobile phone, checks the surrounding CCTV, and dispatches the police to help.

It can be operated in connection with the CCTV integrated operation center, and it can also be automatically contacted to registered police stations and guardians.

#### Main UI

#### Management Viewer

- Emergency Signal use
- Movement Routine
- Center Operation S/W

# 04







## Alice expectation effect

---

Smart City IOC Platform



## Alice Smart City Expected Effects

<p><b>01</b></p> <p><b>Return on investment</b></p> <ul style="list-style-type: none"><li>• Implementing smart city services ensures a clear return on investment</li><li>• Profitability of Dongtan Smart City → Rate of return on investment 157%</li></ul> 	<p><b>02</b></p> <p><b>cost reduction</b></p> <ul style="list-style-type: none"><li>• The introduction of smart city systems minimizes operating costs 10% reduction in overall operating costs through system deployment operations</li></ul> 	<p><b>03</b></p> <p><b>Rise in value</b></p> <ul style="list-style-type: none"><li>• Increase asset value and market impact</li><li>• Through the smart city system 10% increase in the value</li></ul> 	<p><b>04</b></p> <p><b>security assurance</b></p> <ul style="list-style-type: none"><li>• Ensuring the Safety of Urban Crimes</li><li>• Secure citizens' safety by preventing crimes with smart city service in Gangnam-gu</li></ul> 
---	---	---	--

# 03. Alice expectation effect 2

## All services related to the city can be linked

An open platform that allows any service or solution of any other type to be linked

→ All solutions related to the city are integrated.



# 05



## Alice Deployment Case

---

Smart City IOC Platform

# 04. Alice Deployment Case 1

## Project for the establishment of a platform for flood control station in Nakdong River

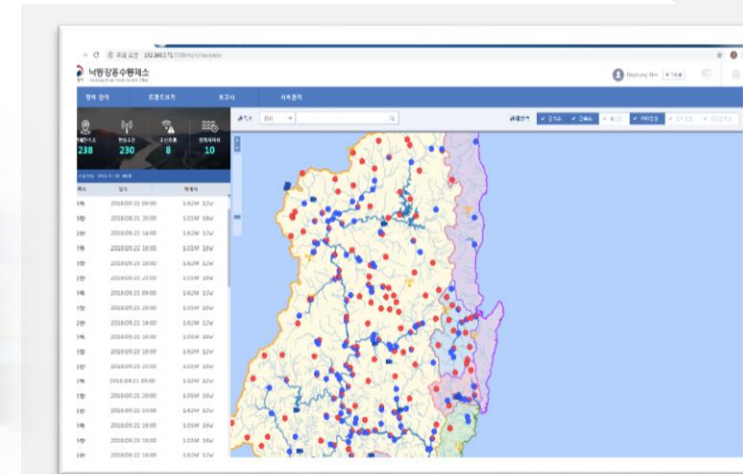


### Business content

- platform establishment
- System integration (flood control station)
- Water level and rainfall data interworking and CCTV images displayed
- Support various reports and associated DB output and management

### Key Products and Solutions

- Integrated platform
- water level measurement sensor
- Rainfall measurement sensor
- CCTV (water level observation)
- GIS Server Interworking



Nakdong River Flood Control System Main Screen



water level variation measuring system by period

## Jeju Island Smart City Platform Establishment Project

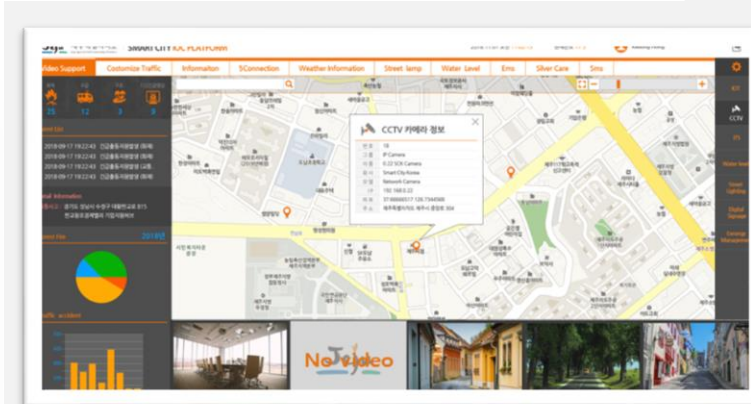


### Business content

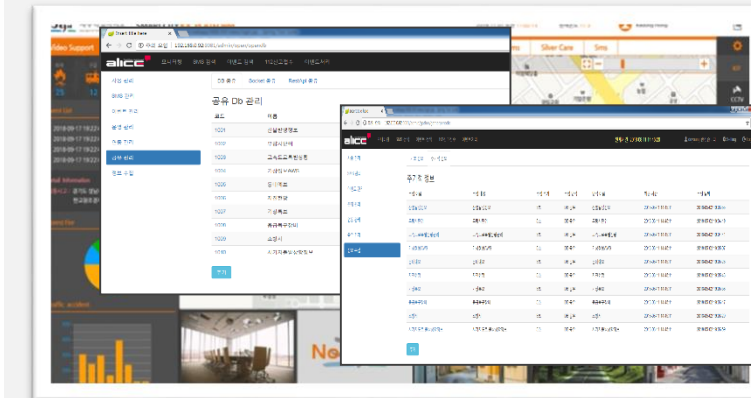
- Project to install Smart City Platform in Jeju Island
- Jeju Island, Jeju City and Seogwipo City Control System Integration
- Top 5 Link Service

### Key Products and Solutions

- Integrated platform
- Integrated Platform Specification H/W , S/W
- CCTV VMS Interworking (more than 6,000 VMS cameras from 3 other models)
- Smart City City Urban Association Top 5 Link Service Package
- Jeju Tourist Emergency Rescue Notification Service
- New GIS



• Jeju Smart City Platform Main Screen



• Jeju Smart City Platform Data Collection Screen

Development Case of Alice Platform

# Integrated Platform in KT Underground Utility Tunnel

Smart Platform in KT

Underground utility tunnel Monitoring Platform implement project

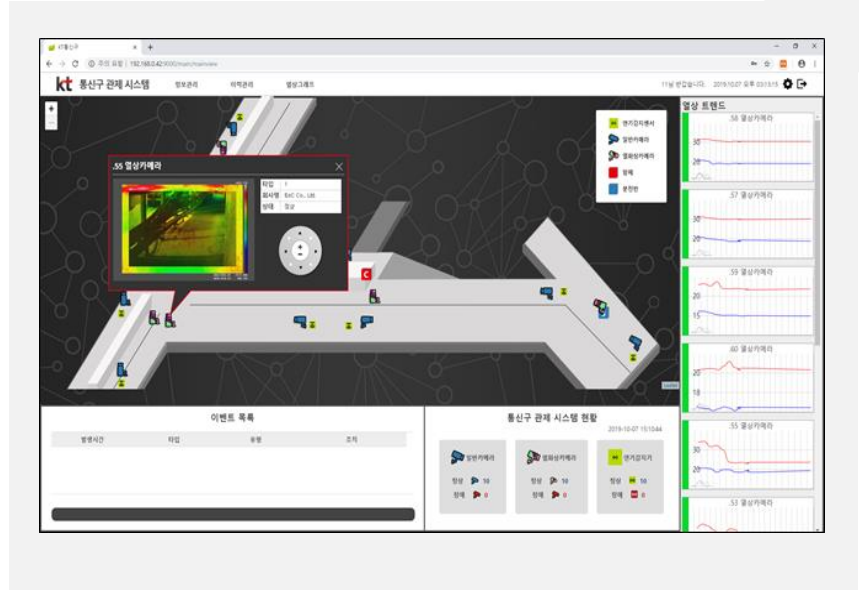


## Business content

- Project to install Smart Platform in KT underground utility tunnels
- KT communication cable, Military communication cable utility monitoring System
- Event alarm Service

## Key Products and Solutions

- Integrated platform
- Integrated Platform Specification H/W , S/W
- CCTV VMS integrated
- IOT sensors integrated with thermal cameras
- Event Notification Service
- New 3D map viewer applied

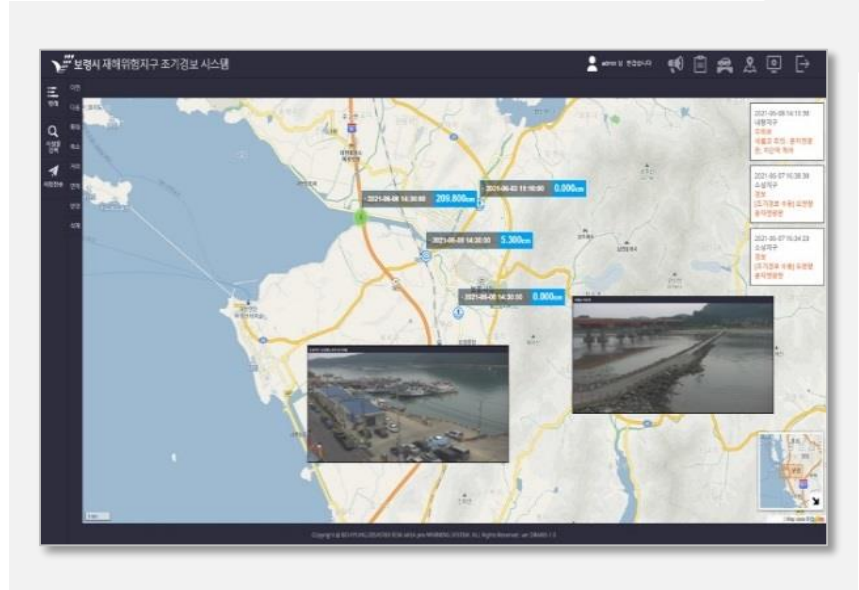
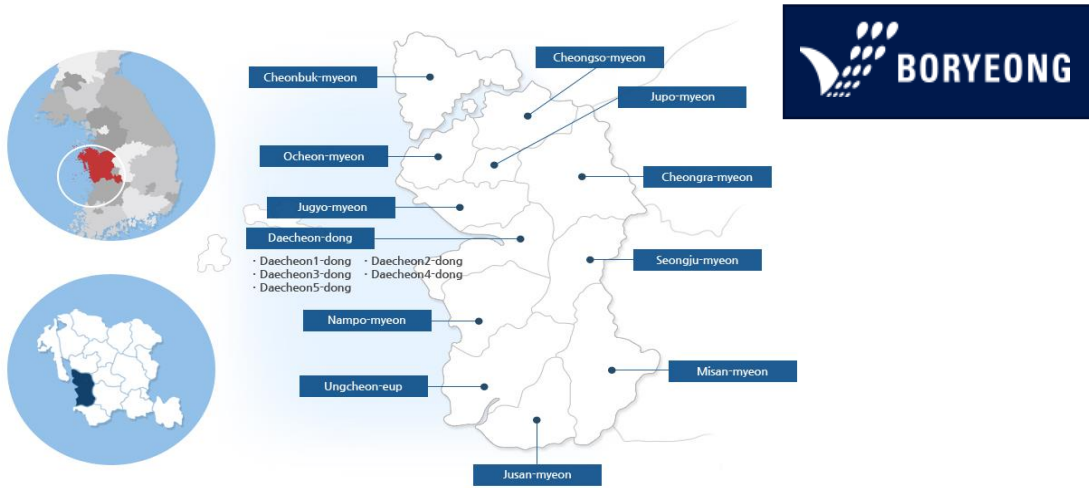


Development Case of Alice Platform

# Integrated Platform in Boryeong city Early Warning System

## Smart Platform in Boryeong City

## Early Warning & Monitoring Platform implement project



### Business content

- Project to install Smart Platform in Biryong City Monitoring Center
- GIS based water level, rainfall data integrated with platform
- Event alarm Service

### Key Products and Solutions

- Integrated platform
- Integrated Platform Specification H/W , S/W
- CCTV VMS integrated
- Water Leve, Rainfall sensors integrated
- Local Broadcasting system, Media wall integrated

Development Case of Alice Platform

# Integrated Platform in Chungcheongnam-Do

## Smart Platform in Chungcheongnam-Do | Smart city Platform implement project

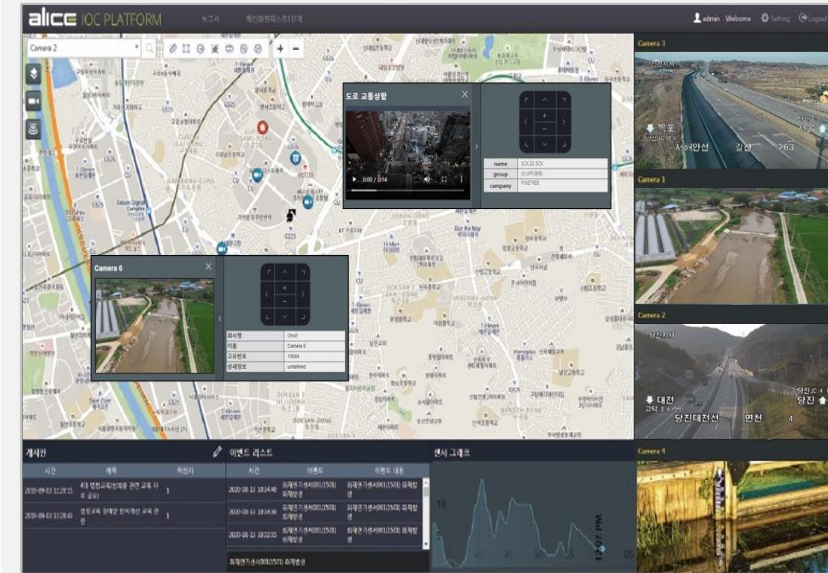


### Business content

- Project to install Smart Platform in Biryong City Monitoring Center
- GIS based water level, rainfall data integrated with platform
- Event alarm Service

### Key Products and Solutions

- Integrated platform
- Integrated Platform Specification H/W , S/W
- CCTV VMS Interworking (more than 25,000 VMS cameras from 5 other models)
- Smart City City Urban Association Top 5 Link Service Package
- S-Services integrated, Mobile App. integrated
- New GIS



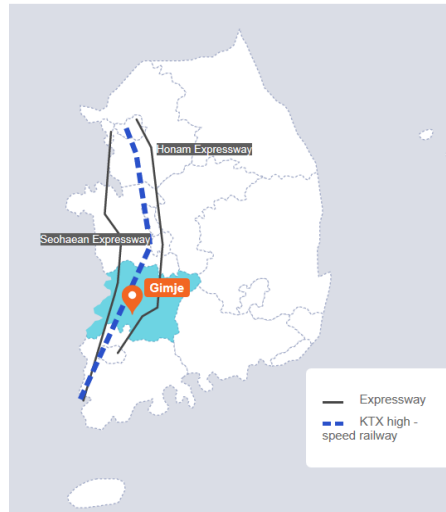
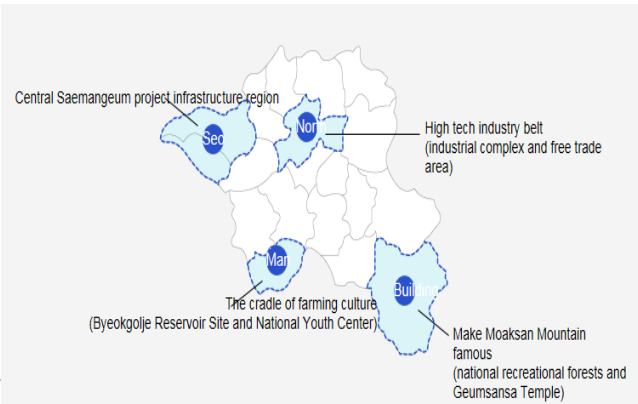


Development Case of Alice Platform

# Integrated Platform in KimJe city Special Vehicle Monitoring

## Smart Platform in Kimje city

## Smart city Platform implement project

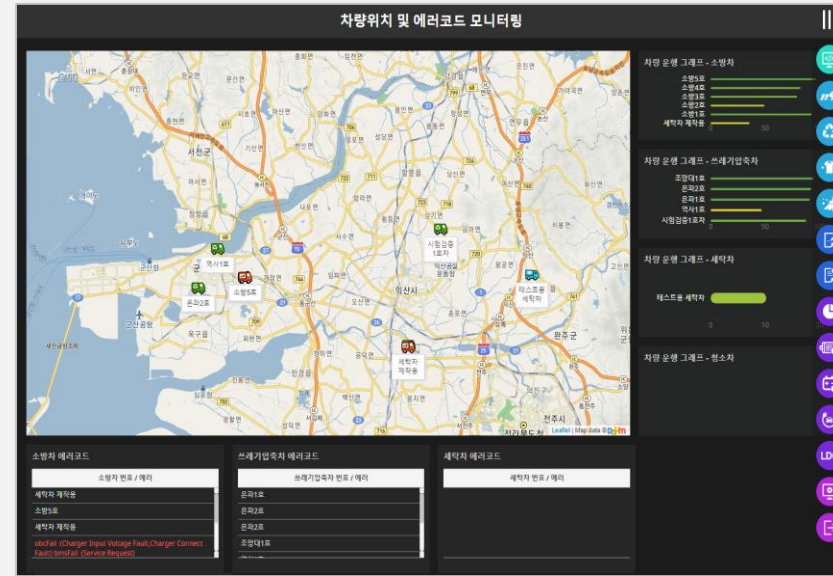


### Business content

- Project to install Smart Platform in Kimje City Monitoring Center
- GIS based special vehicle location in other data integrated with platform
- Event alarm Service

### Key Products and Solutions

- Integrated platform
- Integrated Platform Specification H/W , S/W
- Vehicle status Interworking
- Reports and DB management
- New GIS

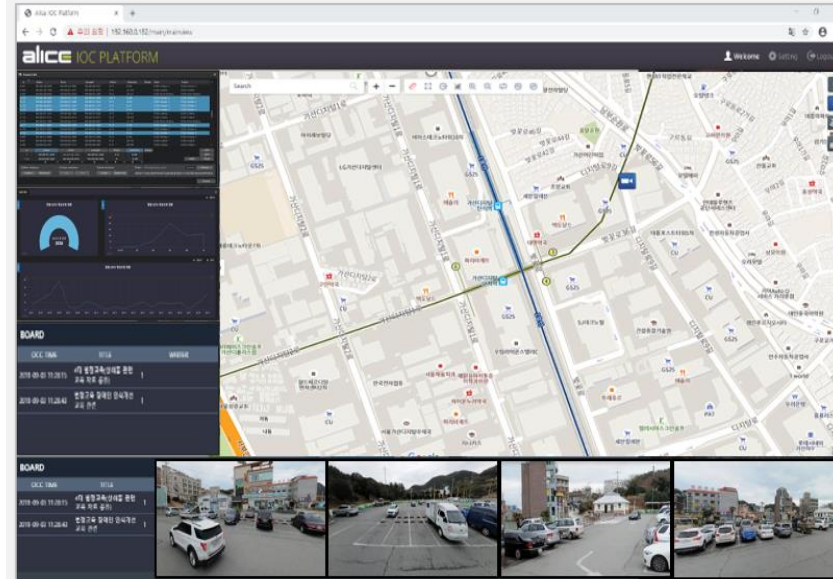
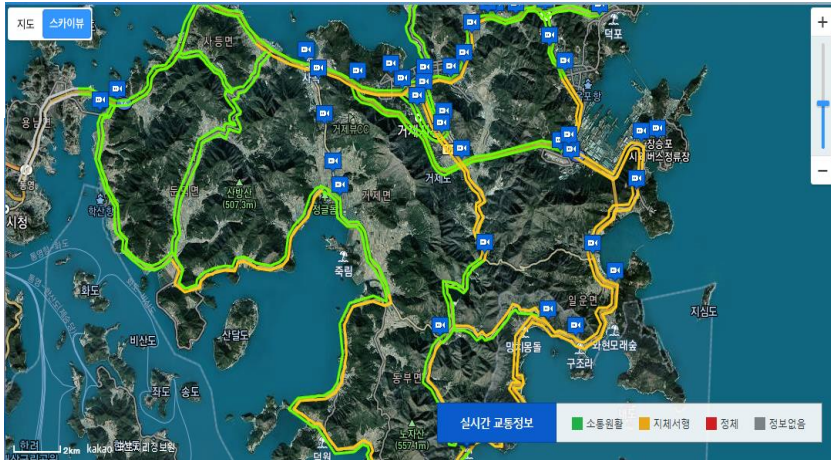


Development Case of Alice Platform

# Integrated Platform in Geoje city Senior Health care Monitoring

Smart Platform in Geoje city

Smart city Platform implement project



## Business content

- Project to install Smart Platform in Geoje City Monitoring Center
- GIS based senior health care devices ( Blood pressure, Heart bite, etc.) location in other data integrated with platform
- Event alarm Service

## Key Products and Solutions

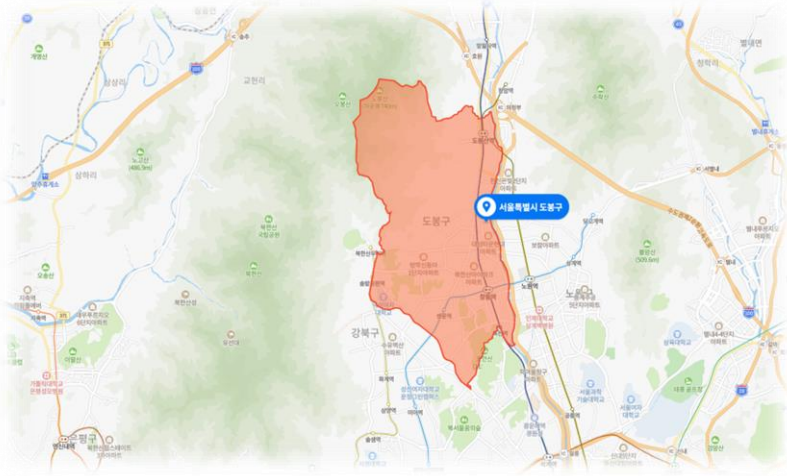
- Integrated platform
- Integrated Platform Specification H/W , S/W
- Location info, ID info, Blood pressure & Heart bite Data status Interworking
- Vehicle parting management with Video Analysis
- Reports and DB management
- New GIS

Development Case of Alice Platform

# Integrated Platform in Dobong-gu Ward Office

Smart Platform in Dobong-Gu Office

Bigdata Platform implement project



## Business content

- Project to install Smart Bigdata Platform in Dobong-gu office Monitoring Center
- Bigdata collection and monitoring with platform
- Graph display & state and event display. Various reports and related DB output and management support
- Support for providing and expressing big data information to the digital ward mayor's office

## Key Products and Solutions

- Integrated platform
- Integrated Platform Specification H/W , S/W
- Smart crosswalk/ Illegal parking for disabled people/ Illegal parking in electric charging areas/ Indoor air quality/ River usage/ Smart trash can/ Gas sensor in confined areas
- New GIS



Development Case of Alice Platform

# Integrated Platform in Nakdong River Monitoring Center

**Nakdong River Project 2022Y | Project for upgrade of a platform for flood control station in Nakdong River**

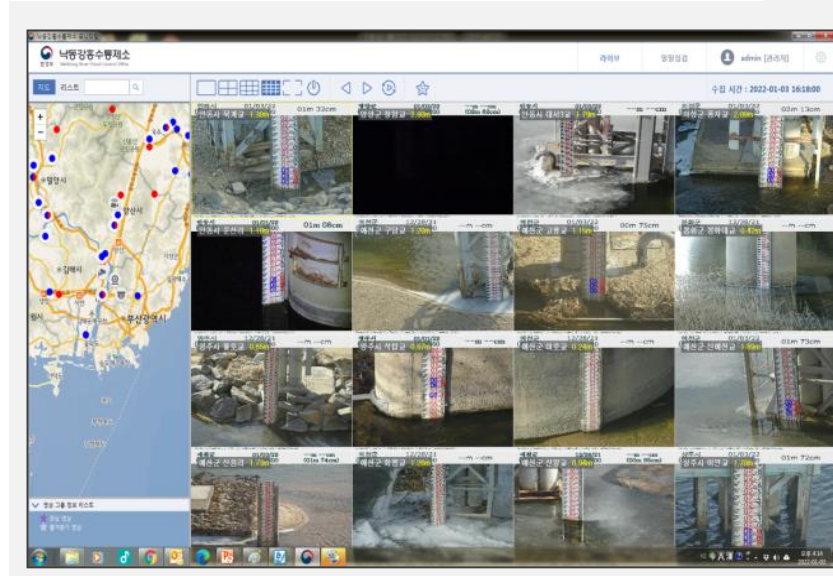


## Business content

- Platform establishment 2022Y
- System integration (flood control station)
- Water level and rainfall data interworking and CCTV images displayed
- Support various reports and associated DB output and management

## Key Products and Solutions

- Integrated platform (CS based integrated platform)
- Total DB integrated
- River video surveillance / electronic sign board / image / video water level / indoor / smart CCTV
- PTZ Control / Smart CCTV On/Off Control
- GIS Server Interworking



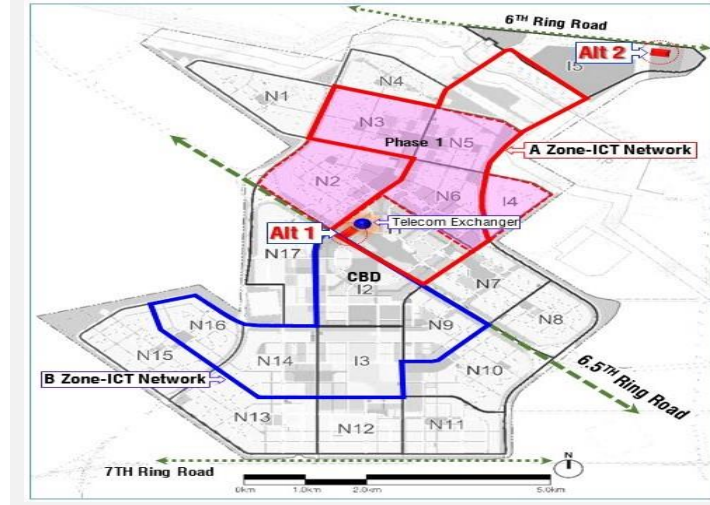
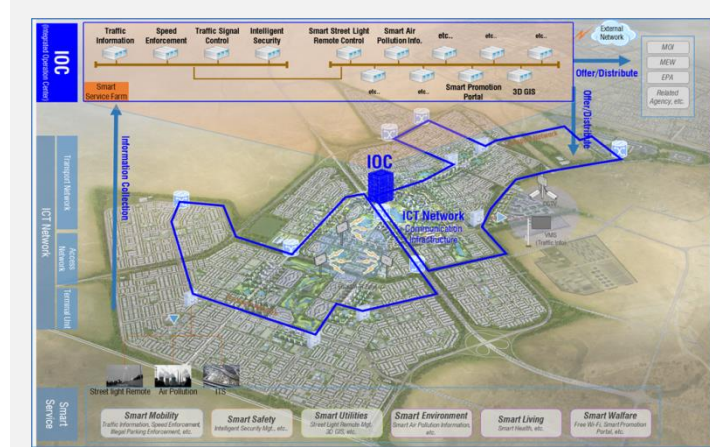
Development Case of Alice Platform

# A Plan to Develop Smart City Center in Kuwait

Smart City in Kuwait

South Saad AL Abdullah Smart city project in Kuwait IOC platform Design

## Phase 4 Smart City Design Report - IOC (Integrated Operation Center)



- IOC location evaluation
- Integrated system and components design
- Integrated platform implementation plan and required function definition

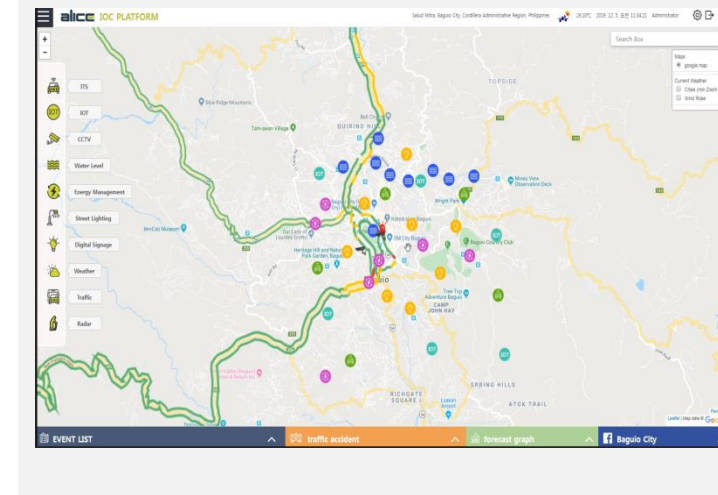
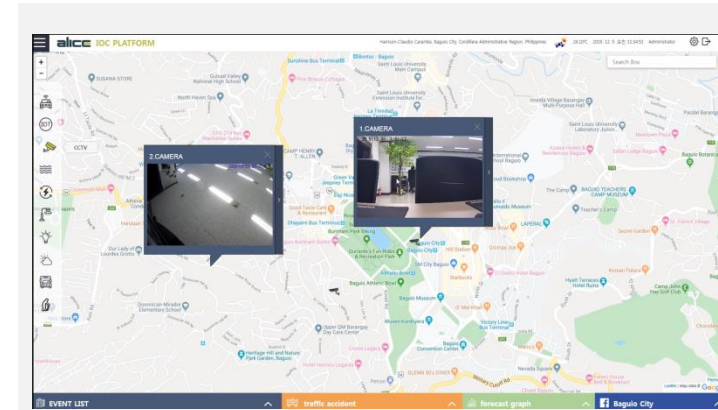
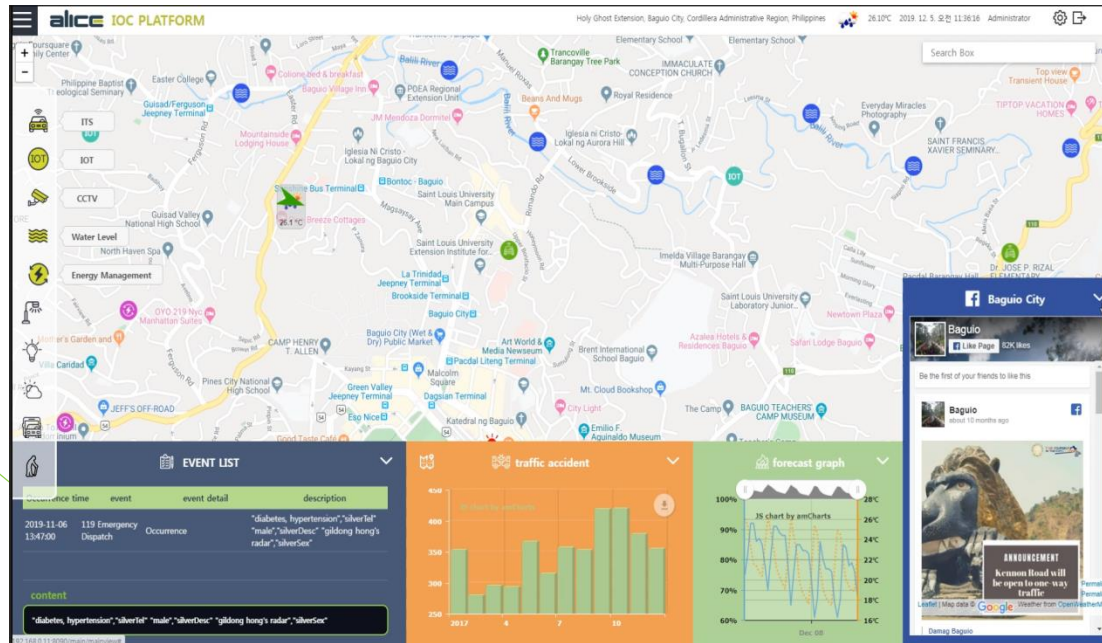
### Key Products and Solutions

- SCK Alice integrated platform is recommended
- Platform system configuration and specs requirement H/W , S/W
- Platform and GIS linking plan
- Common DB configuration and design
- System Security design

Development Case of Alice Platform

# A Plan to Develop Smart City Center in PHP

## Smart City in Philippines | Baguio City in PHP smart city Platform designed and proposal



### Key Products and Solutions

- SCK Alice integrated platform is recommended
- Platform system configuration and specs requirement H/W , S/W
- Platform and GIS linking plan
- Fire sensor & Air pollution management sensor linkage
- LPR camera and Security VMS integrated design



# Thank You.



SmartcityKorea Inc.



+82-2-6959-4800



[sales@smartcitykorea.com](mailto:sales@smartcitykorea.com)



<http://www.smartcitykorea.com>